



SAN RAMON ZONING MAP

December 25, 2020

(Latest Amendment Date: Ordinance No. 506)

ZONING DISTRICTS

RESIDENTIAL

- RC Rural Conservation
- HR Hillside Residential
- RE-A Residential Estate
- RE-B Residential Estate
- RS-12 Single-Family Residential
- RS-10 Single-Family Residential
- RS-7 Single-Family Residential
- RS-6 Single-Family Residential
- RS-D Single-Family Residential
- RM Medium-Density Residential
- RMH Medium-High Density Residential
- RH High Density Residential
- RVH Multiple Family - Very High Density Residential

MIXED USE

- MU Mixed Use
- MU-C Mixed Use - Commercial
- CCMU City Center Mixed Use

COMMERCIAL AND INDUSTRIAL

- OA Administrative Office
- OL Limited Office
- CC Community Commercial
- CT Thoroughfare Commercial
- CS Service Commercial
- CR Commercial Recreation
- MW Manufacturing / Warehousing

SPECIAL PURPOSE

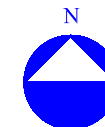
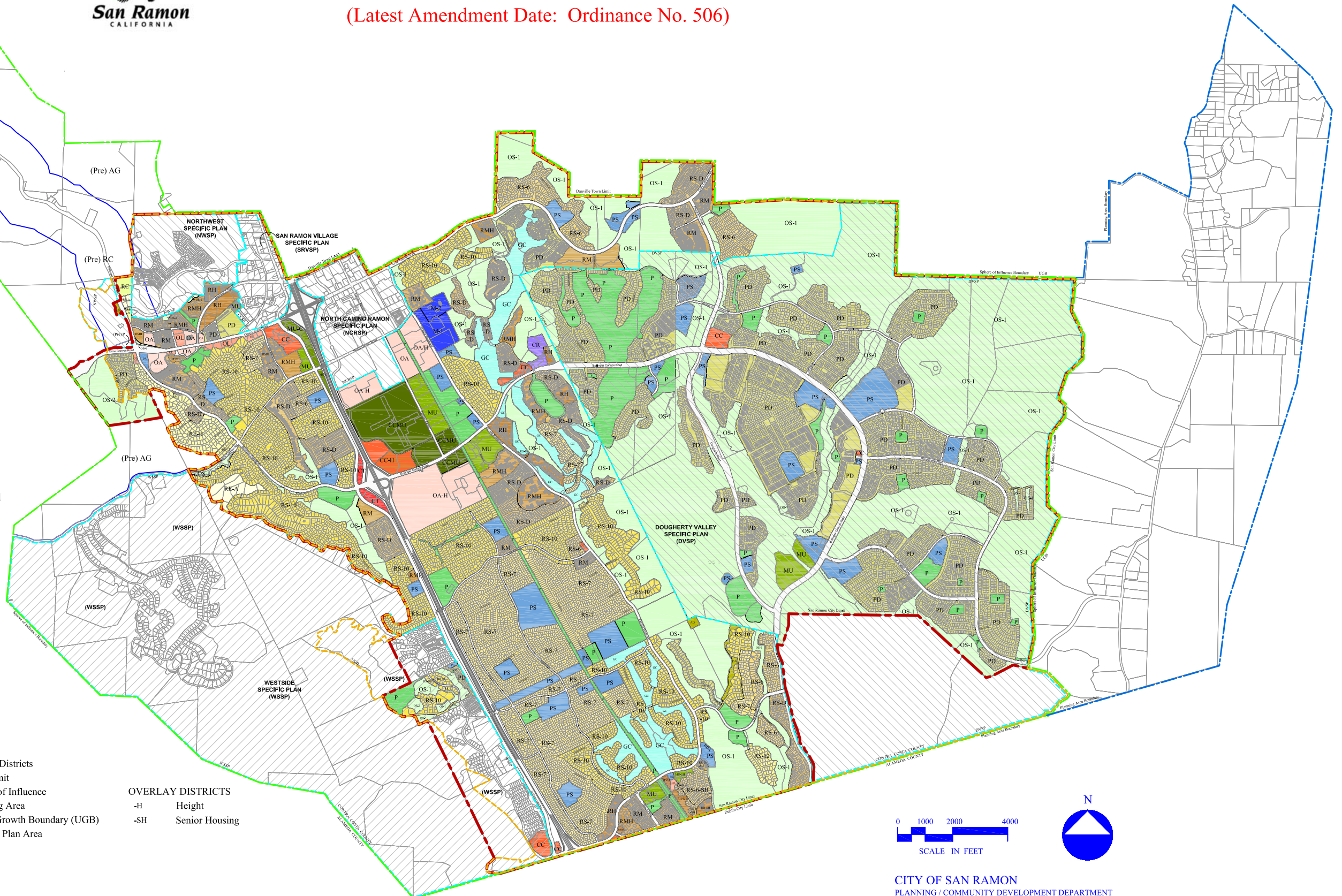
- AG Agricultural
- OS-1 Open Space
- OS-2 Open Space
- P Parks and Recreation
- GC Golf Course
- PS Public and Semipublic
- M-1 Health Facility: M-1
- M-2 Health Facility: M-2
- PD Planned Development

BOUNDARIES

- Zoning Districts
- City Limit
- Sphere of Influence
- Planning Area
- Urban Growth Boundary (UGB)
- Specific Plan Area

OVERLAY DISTRICTS

- H Height
- SH Senior Housing



CITY OF SAN RAMON
PLANNING / COMMUNITY DEVELOPMENT DEPARTMENT